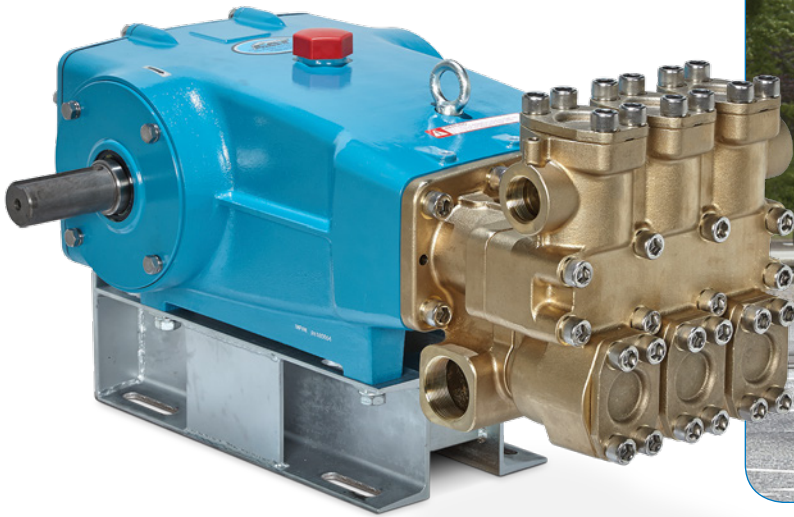


MODEL 67070 PLUNGER PUMP



65 GPM – 2,000 PSI

Designed for High-Flow/High-Pressure Applications

When high-flow and high-pressure are required, Cat Pumps model 67070 is the perfect pump solution. Designed to the highest quality standards, this industrial grade pump offers high-flow performance (65 gpm/ 246 lpm) at higher pressures (2,000 psi/138 bar).

The drive-end of the 67070 pump is built from the field-proven Cat Pumps 60 frame mechanical drive — the best mechanical drive available in triplex positive displacement pumps. Oversized, premium crankshaft bearings offer high loading capacity, greatly prolonging bearing life. Customers worldwide trust Cat Pumps to keep their equipment running.

The model 67070 is what you expect from Cat Pumps: uncompromising quality for optimum performance. For high-flow/high-pressure systems, make it Cat Pumps.

Features:

- Single concentric bore plunger designed with increased wall thickness offers superior heat dissipation, increasing seal life while maintaining optimum performance
- 100% wet seal design adds to service life by allowing pumped fluid to cool and lubricate the packings
- Crankcase crosshead area is concentric with 360° plunger rod support and features drilled-through oil port to lubricate front side of crosshead area

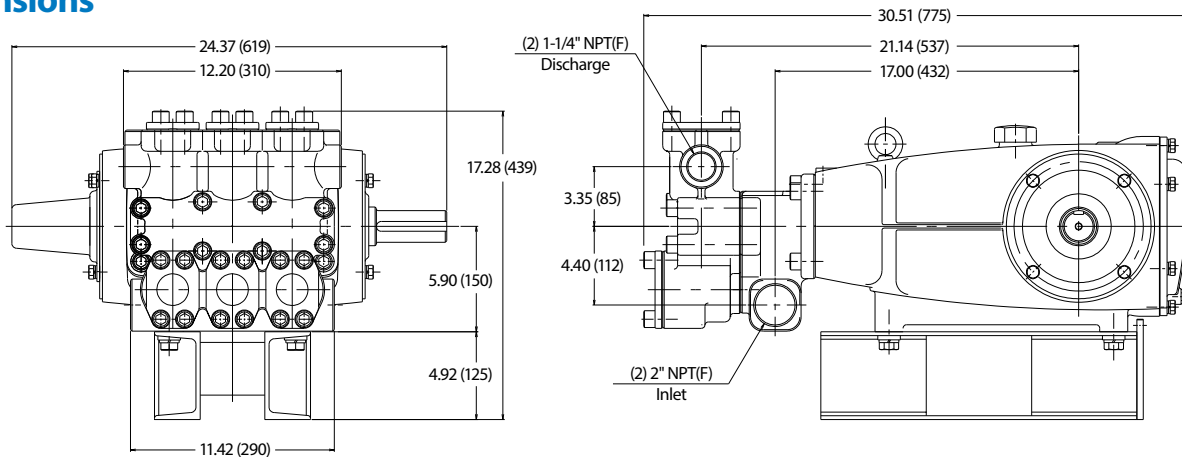
Typical Applications:

- Equipment Washdown
- Water Jetting
- Central Cleaning Systems
- Surface Preparation
- Multi-gun Washdown Systems

Specifications

	US Measure	Metric Measure
Flow	65 gpm	246 lpm
Pressure	2000 psi	138 bar
Inlet Pressure Range	Flooded to 60 psi	Flooded to 4 bar
RPM	850	850
Crankcase Capacity	10 qts	9.46 l
Max. Liquid Temperature	140° F	60° C
Inlet Ports (2)	2" NPT(F)	2" NPT(F)
Discharge Ports (2)	1-1/4" NPT(F)	1-1/4" NPT(F)
Weight	339 lbs	154 kg
Dimensions	12.36 x 24.37 x 30.5"	314 x 619 x 775 mm

Dimensions



Popular Accessories



Pressure Regulator

PN 7376
10 - 75 GPM
500 - 2,000 psi



Relief Valve

PN 890702
25 - 210 gpm
500 - 2,000 psi



Pressure Gauge

PN 6089
0 - 6,000 psi



Pulsation Dampener

PN 701550
122 cu. in.
3,365 psi



Oil

PN 6105
Twin Pack - 2.5 gallon
Specially formulated for extended protection.



PIJTTERSEN

Pijtersen B.V.
Beneluxweg 33
9636 HV Zuidbroek
Tel.: +31(0)50-8200963

KvK 01013855
BIC RABONL2U
BTW NL002166811B01
IBAN NL24 RABO 0353 2970 97



The Pumps with Nine Lives

www.pijtersen.nl - info@pijtersen.nl | www.catpumps.nl - info@catpumps.nl